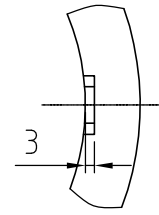
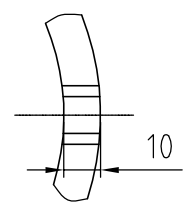


1 | 2 | 3 | 4

bis 10 mm Wanddicke der Hülse durchgefräst (offen)
up to 10 mm sleeve wall thickness opened



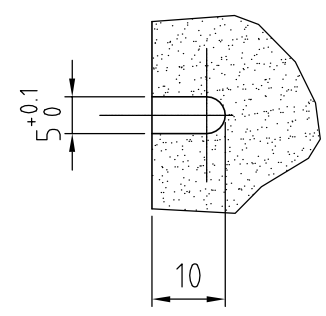
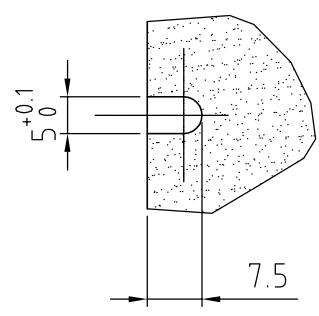
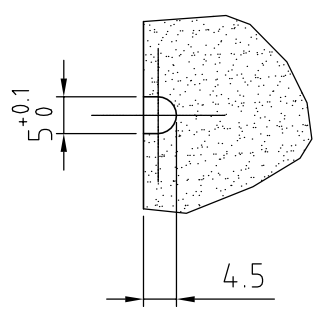
Achtung: Beidseitige Lochzungen müssen unbedingt auf einer Linie liegen.
Attention: Double sided notches to be placed on one line.

ab 10 mm Wanddicke der Hülse eingefräst (verdeckt)
more than 10 mm sleeve wall thickness closed
Paßstifthöhe max. 2.5 mm

PW-2032
PW-2032-2 (beids./doublesided)

PW-2033
PW-2033-2 (beids./doublesided)

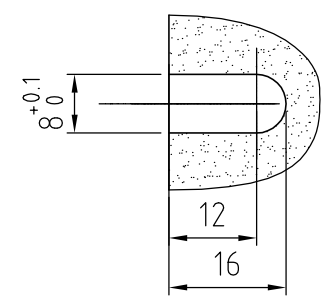
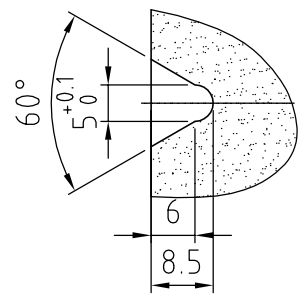
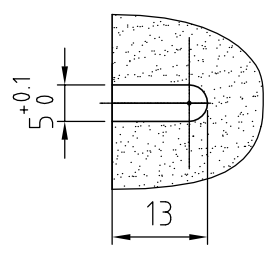
PW-2034
PW-2034-2 (beids./doublesided)



PW-2035
PW-2035-2 (beids./doublesided)

PW-2036
PW-2036-2 (beids./doublesided)

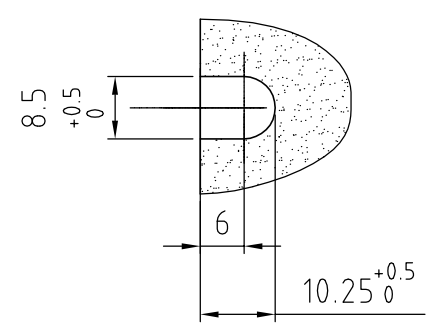
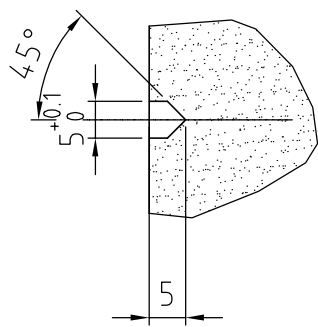
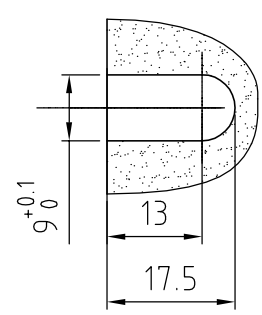
PW-2038
PW-2038-2 (beids./doublesided)



PW-2039
PW-2039-2 (beids./doublesided)

PW-2040
PW-2040-2 (beids./doublesided)

PW-2042
PW-2042-2 (beids./doublesided)



EDV Nr.
9010-01-100-020

Bearb. 30.08.2011 H.Gehling

Best.

Lochzungenformen
POLYWEST

Blatt

Maßstab
1:20

Zeichn.-Nr.

9010-01-100-020

1 | 2 | 3 | 4