

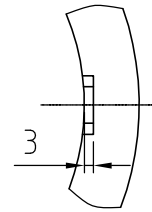
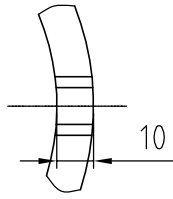
1

2

3

4

bis 10 mm Wanddicke der Hülse durchgefräst (offen)
up to 10 mm sleeve wall thickness opened



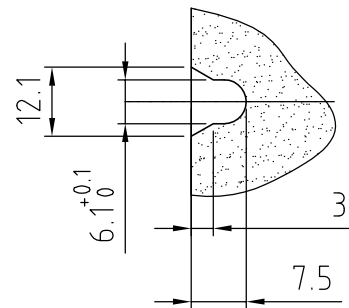
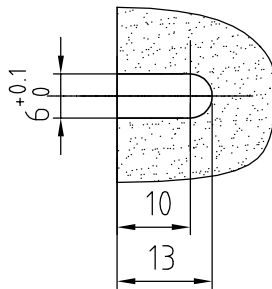
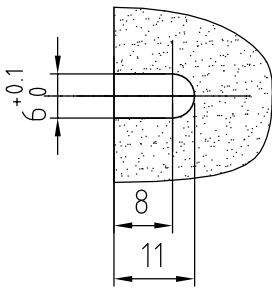
Achtung: Beidseitige Lochzungen müssen unbedingt auf einer Linie liegen.
Attention: Double sided notches to be placed on one line.

ab 10 mm Wanddicke der Hülse eingefräst (verdeckt)
more than 10 mm sleeve wall thickness closed
Paßstifthöhe max. 2.5 mm

PW-2015/8 (einseitig/single sided)
PW-2025/8 (beids./doublesided)

PW-2015/10 (einseitig/single sided)
PW-2025/10 (beids./doublesided)

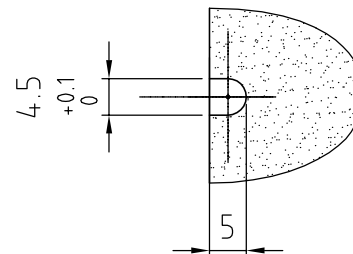
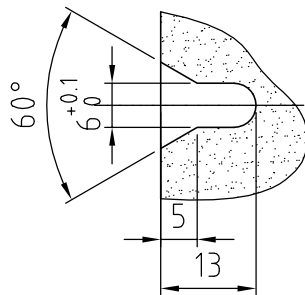
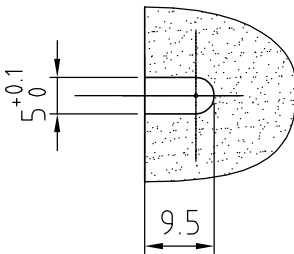
PW-2016 (einseitig/single sided)
PW-2026 (beids./doublesided)



PW-2017 (einseitig/single sided)
PW-2027 (beids./doublesided)

PW-2018 (einseitig/single sided)
PW-2028 (beids./doublesided)

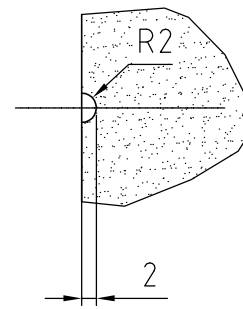
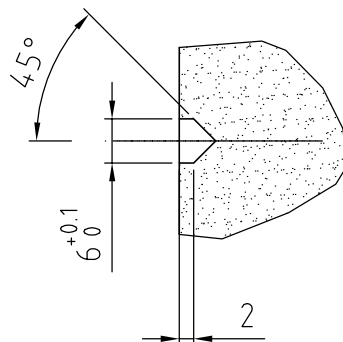
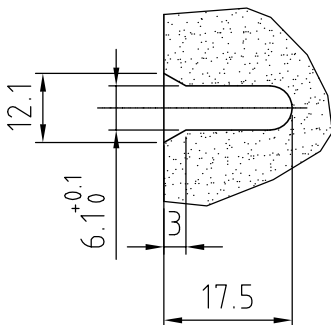
PW-2019 (einseitig/single sided)
PW-2029 (beids./doublesided)



PW-2022
PW-2022-2 (beids./doublesided)

PW-2030
PW-2030-2 (beids./doublesided)

PW-2031
PW-2031-2 (beids./doublesided)



EDV Nr.
9010-01-100-015

Bearb. 30.08.2011 H.Gehling

Best.

Lochungenformen
POLYWEST

Blatt

Maßstab
1:20

Zeichn.-Nr.

9010-01-100-015

1

4